

# Terror Screen

HIGH SECURITY SHUTTERS

**HART**

DOOR SYSTEMS



## **LPS1175 SECURITY SHUTTER WITH FULL THIRD PARTY CERTIFICATION**

Terror Screen is a large and heavy shutter that offers protection for up to 20 minutes against cutting, drilling, crowbars and axes due to its exceptional robustness. This allow enough time for security teams to arrive on site. Hart's Terror Screen SR1-4 roller shutters have been installed at a number of high security locations worldwide including power stations, nuclear facilities, government buildings and data centres etc.

## **BENEFITS**

Insurance compliance | Attack prevention | Security performance | Asset protection | Public safety | Reduced crime

**ENGINEERED** FOR ENDURANCE

# Terror Screen

## HIGH SECURITY SHUTTERS

### CONSTRUCTION

Roller shutter door electrically operated utilising a steel twin skin interlocking roller shutter section with internal strengthening to resist cutting.

The construction of the door is very heavy and the roller is sized as appropriate to minimise deflection and support this load.

### CURTAIN

The door curtain is finished at floor level with a structural bottom beam fabricated from steel and aluminium sections and finished by rubber seal, available to 9m without need for locking at the centre of the rail. The door curtain runs in steel reinforced guide sections with multiple fixings extending at each side.

### FINISH

Optionally Galvanised, plastisol, powder coat all visible components.

### OPERATION

The Door can be press button operated or automatically operated. Various levels of safety can be fitted including safe leading edge and or photocells movement sensors and so on. Controls should be mounted at least 1m from the door structure.

### APPLICATIONS

- Banks
- Military
- Government buildings
- Museums
- Nuclear facilities
- Prisons / Detention centres
- Airports
- Data centres
- Chemical industries



### LOCKING

Locking can be manual with electrical override or fully automatic. Remote signalling options on lock activation can be made through mobile phones or alerts on security systems. For security purposes the engineering construction of the door is not published however our technical department will discuss specifications and individual requirements.

### MOTOR

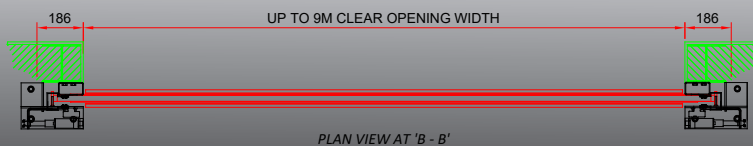
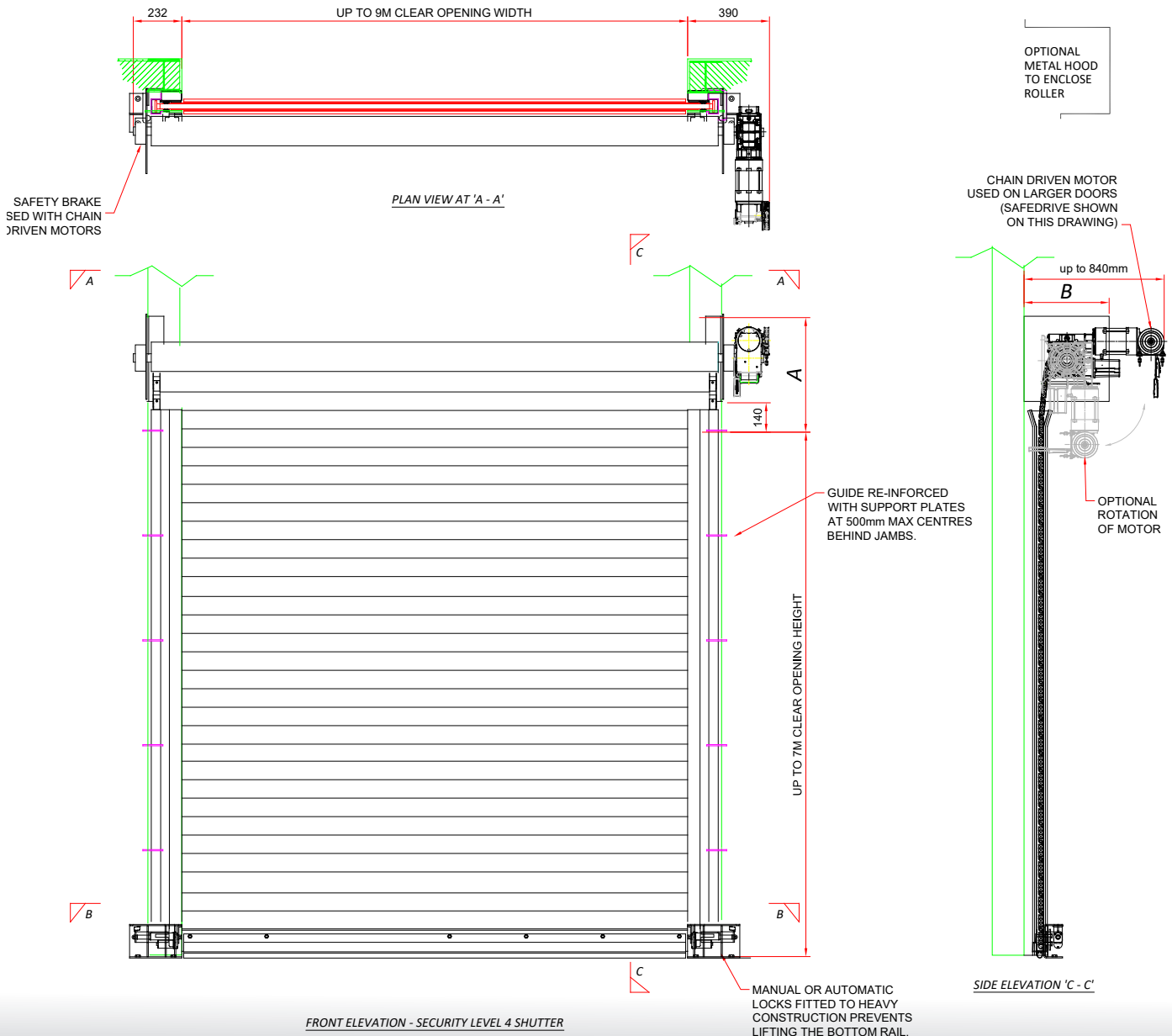
Depending on door size the motor drive is constructed using either safedrive direct drive or via chain drive and reduction gearing supported via a safety brake. Very large sizes may also have internal counterbalance springs to reduce operating loads and minimise the drive requirements.

### STANDARDS

*Door complies with BSEN 12453:2005, BSEN 12604:2000, BSEN 12635:2002, BSEN 12978:2003.*

## TESTING

Tested to LPS 1175 SR4 Issue 7 in January 2014 with full third party certification by BRE/LPC. The doors were tested from 0.9m wide up to 9m wide. Compliance to the standard requires a minimum of 14 hours of rigorous and thorough physical testing by a team of three people. The actual testing procedure has become progressively more aggressive over time and earlier testing to lower issue numbers would not likely be compliant to Issue 7.



Clear Opening Height	A	B
Up to 3m	540	400
Up to 4m	590	450
Up to 5m	640	500
Up to 6m	690	550
6m+	740	600

Note: Sizes above are estimates only. Contact us direct for actual dimensions for your door.

# Terror Screen

HIGH SECURITY SHUTTERS

# HART

DOOR SYSTEMS



## GET IN TOUCH

### AUB LIMITED

Unit A, 12/F  
Hung Mou Industrial Building  
62 Hung to Road, Kwun Tong  
Kowloon, Hong Kong

Telephone +852 2375 6110

Fax +852 2406 2602

enquiry@aub.com.hk

www.aub.com.hk

MADE IN UK

## LPCB®

www.redbooklive.com

### Certificate of Product Approval

Certificate Number: 016c

Issue: 02

#### Hart Door Systems

Redburn Road  
Westerhope Industrial Estate  
Westerhope  
Newcastle upon Tyne  
NE5 1PJ

is authorised to use the LPCB mark in association with the product(s) listed in this certificate and appendix having complied with the requirements of the standard(s) detailed below:

#### Products

Terror Screen SR1  
Terror Screen SR2  
Terror Screen SR3  
Terror Screen SR4  
security shutters

#### Standard

LPS 1175: Issue 7  
Requirements and testing procedures for the LPCB approval and listing of intruder resistant building components, strongpoints, security enclosures and free-standing barriers

This certificate and appendix is maintained and held in force through regular surveillance activities

*P. Dillon*

Signed for LPCB

Paul Dillon  
Verifier

19 September 2016  
Date of Issue

06 June 2014  
Date of First Issue



This certificate and appendix remain the property of BRE Global Ltd and is issued subject to terms and conditions (for details visit [www.redbooklive.com/terms](http://www.redbooklive.com/terms))

To check the validity of this certificate and appendix please visit [www.redbooklive.com/check](http://www.redbooklive.com/check), scan the QR tag or contact us.

LPCB is part of BRE Global Ltd, Garston, Watford, WD25 9XX  
T: +44 (0)333 321 8811 F: +44 (0)1923 664603 E: [enquiries@breglobal.com](mailto:enquiries@breglobal.com)

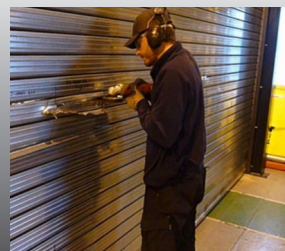
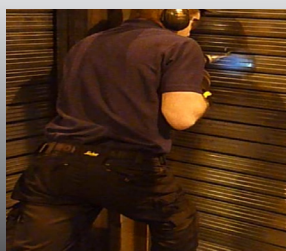


bre

BF1281A Rev 0.5

Page 1 of 3

© BRE Global Ltd, 2014



ENGINEERED FOR ENDURANCE