



HART
DOOR SYSTEMS

Leading the way in the
design, manufacture and
installation of specialist
industrial doors

 **MADE IN BRITAIN**



Hart Door Systems established 1946 - the oldest British manufacturer of high-speed door and shutter is an engineering company that specialises in the design and manufacture of a wide variety of door systems relevant to the challenges of everyday business. Hart resolves many issues within the built environment as well as safety and security issues arising in many global sectors.

Hart's products are in daily use across countries world-wide in vital, economic, sectors such as aviation, energy from waste, infrastructure, food and beverage production as well as a host of manufacturing processes.



AUB Ltd is providing Door Access Solutions for Commercial, Institutional and Residential projects in Hong Kong and Macau.

We are offering a wide portfolio of Products & Solutions including Automatic Doors, Windows & Entrance, Hardware & Interior Doors, Security Gates, Access Control and Industrial Doors.

Service is our Value - we provide Technical Advice & Customized Drawings, Ironmongery Schedules, Master Key Plans, Supply & Installation, Contracting, Training and Service & Maintenance programs and Sourcing.

Key partners and suppliers include GILGEN Door Systems, DORMAKABA Security Solutions, EFAFLEX High-Speed Doors, HART Security & Typhoon Shutters, TBS Biometric Solutions and AIR-LUX Window Systems.

Our experienced team with its in-depth market knowledge, product know-how and business experience is driving AUB Ltd to become a leading brand in the Industry.

Contents

Page

PRODUCTS

Product Overview	2 - 3
Typhoon Roller Shutter	4 - 5
Terrorscreen - Securing your assets	6 - 7
Firebrand - Protecting your people and business from fire	8 - 9
Roller Shutters - Delivering protection for industry, commerce and the public sector	10 - 11

PROJECT PROFILES

Waste	12 - 13
Infrastructure	14 - 15
Airports	16 - 17
Global projects	18 - 19

Hart's Guarantee	20 - 21
-------------------------	---------

Product Overview

DOOR TYPE	DESCRIPTION	MAXIMUM STANDARD SIZE	STANDARD OPENING SPEED	STANDARD CLOSING SPEED	DATA SHEET
-----------	-------------	-----------------------	------------------------	------------------------	------------

TYPHOON SHUTTER PRODUCT RANGE

3000 pa Typhoon Shutter	Typhoon grade insulated roller shutter	8m x 4m	0.15m/sec	0.15m/sec	270
4000 pa Typhoon Shutter	Typhoon grade insulated roller shutter	8m x 4m	0.15m/sec	0.15m/sec	271

THE COMPLETE TERROR SCREEN PRODUCT RANGE

LPS1175: SR1	Security rated shutter	9m x 8m	0.15m/sec	0.15m/sec	240
LPS1175: SR2	Medium security rated shutter	9m x 8m	0.15m/sec	0.15m/sec	241
LPS1175: SR3	High security rated shutter	9m x 8m	0.15m/sec	0.15m/sec	242
LPS1175: SR4	Highest security rated shutter	9m x 8m	0.15m/sec	0.15m/sec	243

THE COMPLETE FIREBRAND PRODUCT RANGE

Fire Shutter	Fire resistant roller shutter	7m x 7m	0.15m/sec	0.15m/sec	600
Fire Resisting Insulated Shutter	Fire resisting radiant reducing insulated roller shutter	7m x 7m	0.15m/sec	0.15m/sec	610

THE COMPLETE SHUTTER PRODUCT RANGE

Industrial Roller Shutter	Heavy duty shutter	8m x 8m	0.15m/sec	0.15m/sec	203
Insulated Roller Shutter	Environmental roller shutter	7m x 6m	0.15m/sec	0.15m/sec	207
Insulated Fast Action Shutter	High speed environmental roller shutter	7m x 6m	0.65m/sec	0.5m/sec	230

OPTIONS

Compliance										Control										Power										Curtain										Protection										Safety										Fit										Fire Safety										Special																																																																																																																																																																																																																																																																																																																																																																																
Wind Resistance to 3000pa	✓									Automatic control panel	✓										Specialist control panel	✓																	415V Three phase supply	✓									230V Single phase supply	✓																			Convex interlocking steel laths																				Steel twin skin interlocking lath	✓																			Wind locking guides	✓																			Bottom rail rubber seal	✓																			Wind resistance	✓																			Barrel and motor hood cover	✓																			0.69w/m insulation hood cover																				18db acoustic value across lath																				Safety manual override	✓																			Pedestrian safety systems	✓																			Locking systems	✓																			Internal application																				External application	✓																			30-240 minute fire protection																				Audio/visual warnings	✓																			Fire release systems	✓																			ATEX version available	✓																			Galvanised/powdercoat/plastisol	✓																			Stainless steel finish	✓																		

Typhoon
grade
up to 4000pa

**Insulated Typhoon
Roller Shutter**



Typhoon Grade Insulated Roller Shutter have been specially designed to suit customer requirements for applications under extreme weather conditions. They provide an ideal choice for distribution centers, warehouses or any facility with large openings in weather exposed locations.

This shutter is designed to comply with the current British and EEC safety regulations. Optional specification levels can be varied to meet any special operational requirements.

Special wind-locks are fitted to each end of every 6th lath to provide additional strength. Extra high-strength guide-stiffeners ensure the structural integrity of the system under high-wind-load.

Customized internal straps to ensure a smooth rolling up.

The bottom lath of the shutter is terminated with a purpose designed weather seal and security sensor strip. Resistance to wind load Class 5 up to 10,000mm width.

KEY FEATURES

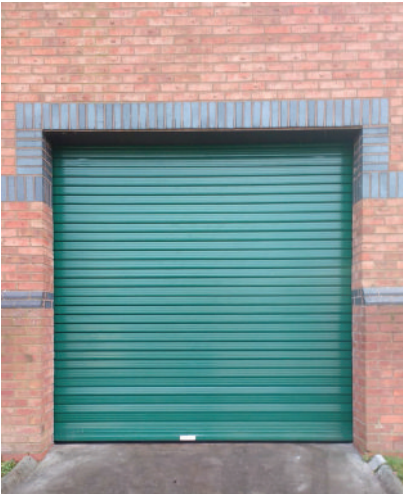
- Resistance to EN 12424 Wind Class 5. Enhanced design to meet minimum pressure resistance of 3,000 - 4,000Pa
- Compliant with prEN 13241-1:2003 & manufactured and installed to iso 9001/2001 and is CE marked.
- Recommended Sizes up to 8m wide x 4m high

BENEFITS

- Typhoon proof
- No intermediate column
- Weather proof

Securing
your assets
up to SR4

Terror Screen



Faced with increasing threats of international terror and serious crime, Hart Door Systems invested heavily in designing and testing high security rolling shutter systems from SR1 - SR4 on the LPS scale.

The range of shutters, branded as **Terror Screen**, are all to Loss Prevention Standards as approved by the LPC Fire and Security Board and Expert Group G. Over 20 organisations assisted in the preparation of this standard more commonly referred to as LPS1175.

Terror Screen shutters have a high-security weight and strength combination through the twin skin steel lath (SR3), reinforced by an aluminium substructure (SR4). This heavy door system is highly resistant to cutting, providing significant resistance to attack. Drives, particularly on larger doors, will be chain driven rather than the simpler direct Safedrive units.

Independent tests confirm the SR4 withstands 20 minutes of direct attack, including 10 minutes with drills, grinders and hand tools. This allows on-site security time to arrive and secure the location, protecting key infrastructure facilities and high-value businesses and their assets.

Qualifying products such as Terror Screen are listed in the LPCB Red Book/ Red Book Live which is the key reference for specifiers, regulators, designers and end-users of fire and security products and services. Each product and service listed in the Red Book is robustly checked by independent experts to ensure that it delivers the performance expected.

KEY FEATURES

- Tested and approved to LPS 1175 Issue 7
- Complies with BSEN 12453:2005, BSEN 12604:2000, BSEN 12635:2002, BSEN 12978:2003
- Sizes up to 9m wide x 8m high
- Operation by press button or various automatic operators
- Electric/manual locking arrangements

BENEFITS

- Attack prevention
- Security performance
- Asset protection
- Public safety
- Insurance compliance

Protecting
your people
and business
from fire

firebrand



Hart's Firebrand range of fire-resistant shutters, rated from 30 minutes up to 240 minutes fire resistance, are manufactured to customer dimensions and specification including powder coating in any RAL colour to suit.

Legislation enforced on 1st November 2019 requires fire doors to be tested to BS EN 1634-2 for compliance, substituting the BS 476 part 22 British standard. Doors supplied to the old BS 476 standard are not compliant with the law.

Hart Firebrand shutters are tested, assessed and certified by the LPCB to BS EN 16034 tested to BS EN 1634-2. ISO 9001 certification ensures production and installation are completed to all relevant standards, including compliance to safe use requirements. A BRE controlled labelling procedure ensures product identity, traceability and compliance.

Operation in a fire situation has five clear requirements:-

1. Doors permanently locked and only opened temporarily in a controlled environment do not have a requirement to self-close in the event of a fire
2. All other doors must operate in a fail-safe mode so that when power is removed, the door will close fully
3. Doors with local activation via a fusible link or heat sensor require audio visual warning when the door is closing
4. Doors operated via central fire and smoke control systems require audio visual warning and presence detection of pedestrians. The door will not close if the sensors detect people or objects
5. All doors should be maintained to a professional standard by trained operatives with full records kept

Increasing levels of automation and safety requirements are available such as operation via battery backup in varying levels of performance, from full operation reducing to control of the closing only. Optional ATEX compliance and security rating SR1-SR3 is available.

KEY FEATURES

- Activation from fusible link, fire alarm signal or local smoke/heat detection
- Fire control panel giving audio and visual warnings
- 30 minutes resistance up to 4 hours
- Certified to BS EN 16034 and tested to BS EN 1634-2 and or US standard NFPA80 UL10b
- Optional battery backup to comply with various levels of control

BENEFITS

- Compartmentalisation
- Fire barrier
- Public safety
- Temperature control
- Security

Delivering protection
for industry,
commerce and
the public sector

HART'S INDUSTRIAL ROLLER SHUTTERS



The extensive choice of industrial shutters and the ability to accommodate customers' specifications makes Hart a leader in this vital sector.

Hart's shutters are used in a wide range of industrial sectors as well as general commerce, schools, universities and hospitals to protect against vandalism, break-ins and theft. Sizes are normally up to 10m in width with an option for light or heavy-duty wind resistance. The operation can be automatic or manual and finish can either be specialist paint, plastisol or powder coat in a variety of colours. Standard finish is solid steel.

INSULATED ROLLER SHUTTERS

Insulation is a key feature of an energy-saving environment; essential in today's modern business context. Hart has a wide selection of lath profiles which are recommended. Steel, aluminium and stainless are all available in various profile sizes within our industrial shutters. These shutters have a thermal value of minimum 0.69w/m.sq.k and 18db as standard across the lath with increasing performance options available. Guides incorporate brush seals to seal and minimise operational noise.

SPECIALIST ROLLER SHUTTERS

Hart has the expertise to develop custom-made doors to maximise performance in any environment. Specification and application in corrosive, hazardous, high humidity and exposed locations requires careful consideration. These difficult environments may need stainless steel, ATEX compliance or special IP rated electrical equipment to provide the best long-term solution. If high performance, reliability and longevity are important, Hart has the solution.

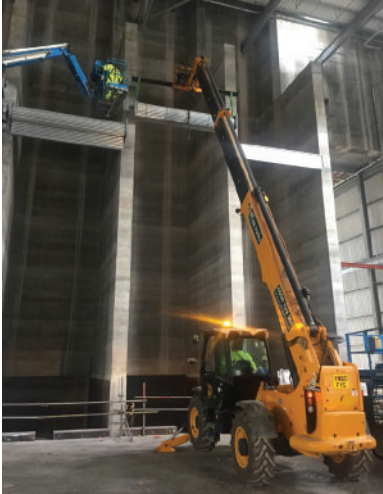
KEY FEATURES

- Optional wind lock guides available for wind resistance class 5
- Safedrive or safety brake anti fall to comply with machinery directive 2008
- Choice of operators including push button, security key switch or automatic controlled
- Acoustic and insulation properties

BENEFITS

- Compartmentalisation
- Public safety
- Temperature control
- Access security

Project Profiles:
WASTE



Hart's range of environmental, fire and security products are in daily use in key sectors such as airports, pharmaceuticals, defence, energy and the nuclear/electrical power industry, water, transport, food, automotive, pulp and paper, waste to energy, as well as major social projects such as sporting stadia. Hart's reach is global, its sector experience immeasurable.

Hart Door Systems is at the forefront of waste control through its energy-saving range of robust, high-speed, automatic doors. Increasingly there is a demand for door systems to help operators in the waste management sector to operate sympathetically with their neighbours.

Hart has developed a range of options including some very large high-speed doors specifically for the waste management sector. The fast open/close cycle delivered by Hart's doors is one of the important features preferred by operators.

WASTE CHALLENGES

- Local authority opposition to odour and noise
- Pests including rodents, pigeons, seagulls
- Difficult conditions on site - dust and moisture
- High traffic
- Large vehicles

HART'S PROVEN SOLUTIONS

Hart is supplying doors to a growing number of energy from waste projects across the UK, with many high profile clients in the renewable energy sector such as HZI, Veolia and Viridor.

Typically Hart installed two fast-action Speedors for a haulage company specialising in waste disposal at a Midlands facility. The two Speedor Storms were installed to minimise the escape of dust and smells as well as keeping out birds and rodents. The fast action allows for quick arrival and tipping of waste within a closed harsh environment so reducing the chance of smells leaving the building.

Both Storms were supplied with optional moisture control of electrics. The largest door was 6m high and 8m wide. It is Hart's reputation for delivering reliable, very large, high-speed automatic doors for the waste industry that leads to contracts such as this.

Three Speedor Storms were installed at an in-vessel composting facility capable of processing 60,000 tonnes of kitchen and green garden waste each year. Hart now has over 60 doors installed across 11 sites for the same client, all supported by Hart's Machinery Directive compliant planned maintenance service. Hart's experience on these projects highlights the many challenges for the operator for which Hart has engineered unique solutions.

Project Profiles:
INFRASTRUCTURE



Hart has supplied thousands of industrial doors to **infrastructure** projects both across the UK and internationally across rail, ports, energy and utilities. The contracts indicate an ability to work within the strict disciplines of major, complex contracts. Hart's reputation for technical excellence developed over many years has given Hart a distinct edge when involved in major infrastructure projects like St. Pancras.

INFRASTRUCTURE CHALLENGES

- Advanced technical specification
- Access (operational areas)
- Security and fire risk
- Connectivity to external systems and software
- Heat loss
- Varying traffic e.g. vehicle and pedestrian.
- Securing zones from intruders
- Public safety
- Attack and threat prevention

HART'S PROVEN SOLUTIONS

These include the development of London St Pancras, where Hart manufactured and installed over 70 industrial doors and shutters, and Dubai Metro where Hart manufactured over 200 insulated roller shutters, both fire-rated and non-fire rated for the Jebel Ali, Rashidiya and Al Qusais train depots.

Hart also completed a major contract to replace old and unreliable shutters for Southern Railway. The £100,000+ contract included the removal of old doors and reinstallation of nine doors of varying sizes with the largest being 8.5m wide and 4.7m high.

Project Profiles:
AIRPORTS



Hart Door Systems is highly experienced in airport contracts supplying safety, fire protection and security solutions to over 40 airports world-wide including Dubai, London Heathrow, Jeddah, Baghdad, Bergen, London Gatwick, Newcastle International, Aberdeen, Falklands, Vladivostok and Harare.

AIRPORT CHALLENGES

- UK, EU and international standards
- Airport security
- Connectivity to external systems and software
- Technical collaboration
- Securing zones from intruders
- Public safety
- Attack and threat prevention

HART'S PROVEN SOLUTIONS

A recent contract involved a specialist baggage handling system for Malta airport where Hart supplied eight fire shutters to form a baggage handling system capable of handling over 16,000 tonnes of cargo as well as enhancing the experience of its 6 million passengers annually.

Hart has worked with specialist engineering companies on international projects. For example, Hart delivered 177 fire and security shutters for the new King Abdulaziz International Airport, Jeddah. Originally designed to cater for 7 million passengers, the expansion will have a final capacity of 70-80 million passengers by 2035.

Additional security and fire protection is available for bespoke systems such as those supplied by Hart at Bergen, London Heathrow and Baghdad International as well as many other major airports. Continuous cyclic tests completed by Hart showed over 2,500,000 open/close cycles were achieved with no technical faults within a six month period.

Project Profiles:
GLOBAL PROJECTS



Hart is linked to many large-scale and export projects such as London's Olympic Stadium (West Ham United London Stadium), St. Pancras International, Dubai Metro and King Abdulaziz International Airport, Jeddah.

Found in over 35 countries worldwide, Hart's range of industrial door applications are a common sight. Hart has the knowledge and experience when working on large scale projects to advise, technically collaborate and offer cradle to grave support, which is a crucial ability when dealing with such projects.

Hart's unique level of product specialism comes from a policy to drive door systems development and product testing that ensures they are practical and work as specified. Quality, safety and reliability are very important features for doors that are largely in public areas.

GLOBAL PROJECTS CHALLENGES

- UK, EU and US international standards
- Challenging timeframes
- Technical collaboration
- International logistics

HART'S PROVEN SOLUTIONS

Hart manufactured and installed 21 fire resistant and security shutters to the Olympic Main Stadium, requiring advance battery backup and operational features. A further 50+ security and fire shutters were then required for the Olympic Stadium transformation project,

including kiosk shutters, security entrances and POD buildings surrounding the arena.

Hart supplied 32 Speedors and 17 fire shutters for a new production facility in Sharjah for IFFCO a United Arab Emirates based manufacturer of a range of mass-market consumer products including food and beverage products.

Supplying fire shutters to the oil sector in Kuwait, Hart demonstrated the ability to manufacture and supply superior high-quality products and provide technical backup all around the globe expanding further into the middle east.

Boosting the international presence of the Speedor range further, Hart worked on a £250 million expansion project by Qatari Diar Real Estate Investment Company of its landmark Msheireb mixed-use community development in Khartoum, Sudan.

Hart's international success comes from the ability to offer a bespoke design and engineered solution, along with a genuinely consultative sales process that builds trust.

Hart's Guarantee

WARRANTY

Each door comes with a parts and material warranty for one year, subject to conditions. Extensions can be offered for longer periods and include full maintenance support.

Service and maintenance is required by law to the manufacturer's recommendations and carried out by trained professionals using only bonafide original parts. Hart offer a full service tailored to your requirements.

MAINTENANCE

It's a legal requirement that employers take all reasonable actions to safeguard employees' welfare. Scheduled maintenance of machinery, including automated doors, is part of the Machinery Directive with a minimum annual visit required to comply with Health & Safety Legislation or more frequently on higher usage doors. Any injury sustained resulting from door malfunction, identified as a result of poor or lack of maintenance during a Health & Safety inspection, has the potential for criminal prosecution.

Planned preventative maintenance is a scheduled service visit carried out by a competent and suitable agent to ensure that an item of equipment is operating correctly, avoiding any unscheduled breakdown and downtime. Hart can offer a custom package to suit individual requirements where planned maintenance and site faults are responded to at the same time. This allows larger sites to minimise unplanned spikes in their maintenance budgets.

CASE STUDY

A customer had a service and repair spend of £33,000 – with Planned Preventative Maintenance and response offered by a Competitor. Hart Door Systems now visit on a weekly basis and have saved the customer £13,000 in the first year in visible costs (Hart versus Competitor Invoicing), that's without lost production and having to re-route forklifts etc. Pro-active rather than reactive actions, providing palpable savings.

Standards and accreditations

Why Hart Doors?

What differentiates Hart Doors from other door manufacturers?

- ✓ Equal opportunity employer
- ✓ Apprenticeship programme
- ✓ Training good people
- ✓ Addressing the skills' shortage issue
- ✓ Performance - Quality and Capability
- ✓ British manufacturers - unsurpassed expertise
- ✓ Personalised solution specialist - safety, security, control of the environment, compliance, building business efficiency
- ✓ Trusted - people, products and brands
- ✓ Reliability - tried and tested, fit for purpose
- ✓ Track record - continuity, experience and skill, reputation, longevity
- ✓ Customer focus
- ✓ Parts on demand



Assessed to ISO 9001
LPCB Cert. No 016



LPS 1056. Issue no 6.1, Cert No 016a/01
LPS 1271: Issue no 2.0, Cert No 016b/01



Raising Standards
Safety Assured

Misrepresentation Act: Every effort has been made in this document to give an accurate summary of Hart Door Systems and its product range. Please note that continuous product development can result in changes in design, specification and method of operation so please refer to the company's latest Datasheets for the most up-to-date information. Autumn 2019

A dark, low-key photograph of a worker wearing a hard hat and a safety vest, focused on a task. The worker's vest has a 'HART' logo on it. The background is filled with vertical elements, possibly door frames or structural components, creating a sense of depth and industrial activity.

HART

DOOR SYSTEMS



AUB

AUB Limited
Unit A, 12/F, Hung Mou Industrial Building,
62 Hung To Road, Kwun Tong,
Kowloon, Hong Kong
Tel : +852 2375 6110
Fax : +852 2406 2602

Email : enquiry@aub.com.hk
www.aub.com.hk